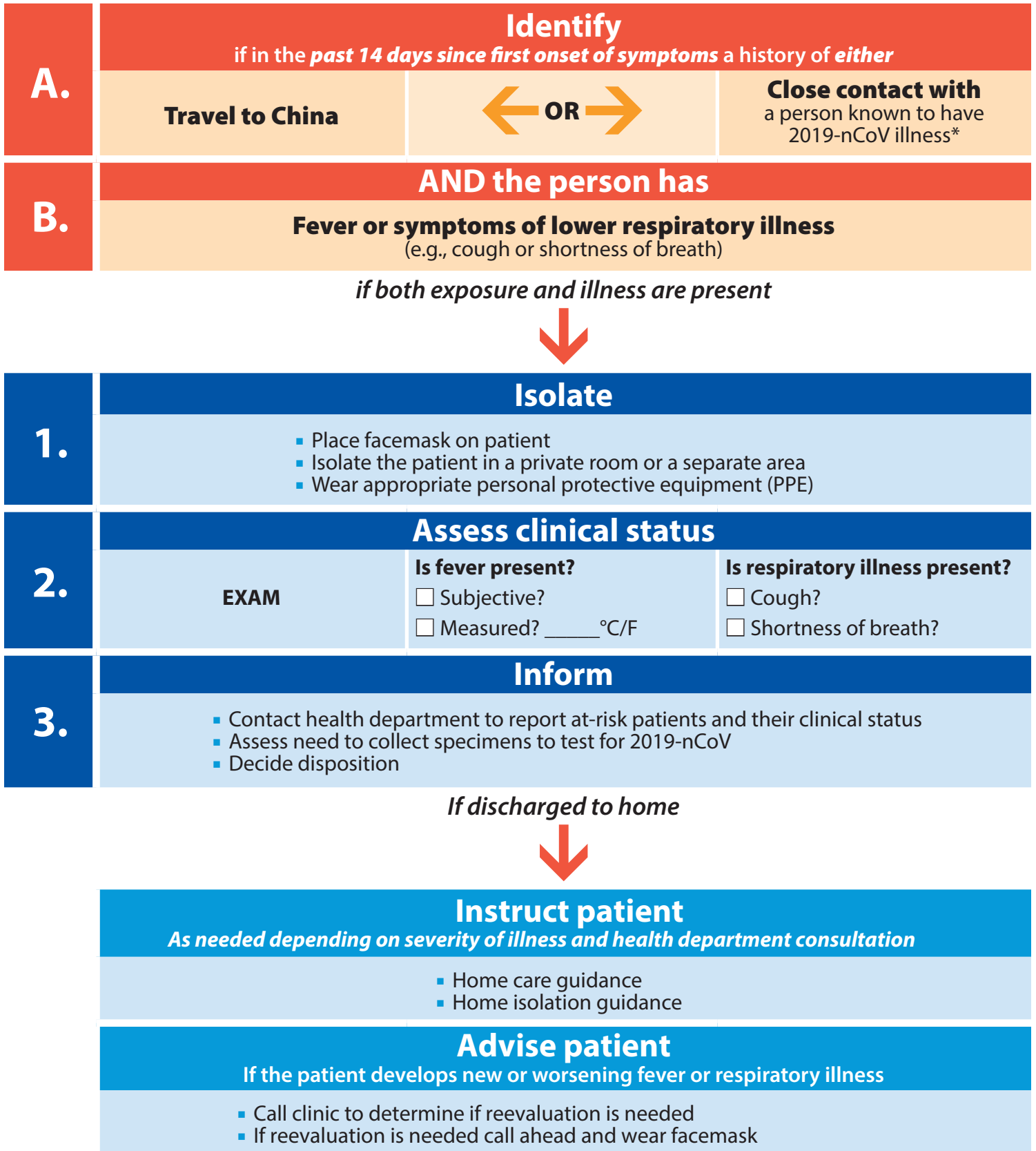


Flowchart to Identify and Assess 2019 Novel Coronavirus

For the evaluation of patients who may be ill with or who may have been exposed to 2019 Novel Coronavirus (2019-nCoV)



* Documentation of laboratory-confirmation of 2019-nCoV may not be possible for travelers or persons caring for patients in other countries. For more clarification on the definition for close contact see CDC's Interim Guidance for Healthcare Professionals: www.cdc.gov/coronavirus/2019-nCoV/hcp/clinical-criteria.html

Patients with COVID-19 have experienced mild to severe respiratory illness.

Symptoms* can include

FEVER



COUGH



*Symptoms may appear 2-14 days after exposure.

If you have been in China or in close contact with someone with confirmed COVID-19 in the past 2 weeks and develop symptoms, call your doctor.

SHORTNESS OF BREATH

